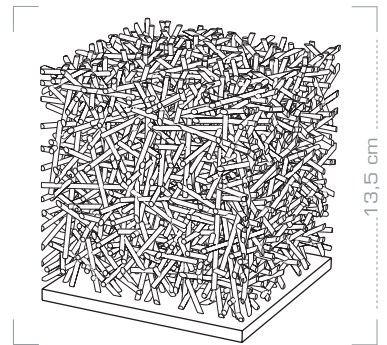


**Colour:** shade: white  
**Total net weight:** 764 g  
**Dimensions:** Total length: 13,5 cm  
shade: 11 X 11 X 11 cm  
**Models available:** 13,5 cm table vers. & 43 cm table vers.  
**Package contains:** 1 shade, 1 transformer 12V + dimmer,  
metal base, 20W halogen  
\*.MGX data file on CD  
**Technology:** SLS (Selective Laser Sintering)  
**Material:** shade: polyamide (nylon)  
base: stainless steel (brushed)

**DESIGNED BY:** STRAND + HVASS  
**TYPE:** TABLE LAMP 13,5 CM

**CHAOS.MGX**



**CE:**

Art. Ref.: CHA.LT30.CE.--

CE conformity, licence 13982C decorative portable and fixed luminaires.

EN 60598-1:2000 + A11:2000, NBN EN 60598-1:2000 + A1:2001 + A2:2002

**Rating:** 240 Vac, 50 Hz, Class II, IP 20, 12V (incl. transfo)

**Lamp type:** halogen 12V GY6,35 - Max 20W

**Available plugs:** australian, european, british, italian,...

**UL-cUL:**

Art. Ref.: CHA.LT30.UL.--

UL conformity license: Listed 102979-001. Use in dry location.

mounted electric luminaires, susp.: E241112 - UL 1598. CSA C22.2 no 250

portable electric luminaires: E254046 - UL 153. CSA C22.2 no12

**Rating:** 120V, 60Hz, 12V (incl. transfo)

**Lamp type:** Xelogen T3, 12V G4-20W Max (supplier www.thhc.com)

**Available plugs:** american

**Maintenance:** SLS: easily remove stains with water & clear soap

.MGX trademark: 852494

